

# SFW. | Pressurised breather caps

with double valve, technopolymer

NPT

RoHS

PA

+212 °F  
-22 °F

- 1
- 2
- 3
- 4
- 5
- 6
- 7
- 8
- 9
- 10
- 11
- 12
- 13
- 14
- 15
- RH

## MATERIAL

Polyamide based (PA) technopolymer.  
 - Cover: RAL 2004 orange, semi-matte finish, with graphic symbol "valve".  
 - Threaded connector: black colour, semi-matte finish.

## PACKING RING

NBR synthetic rubber.

## OVERPRESSURE VALVE

Technopolymer with NBR synthetic rubber O-ring and stainless steel spring.  
 Set at around 0.350 bar (0.700 bar on request).

## SUCTION VALVE

Technopolymer sealing disk with NBR synthetic rubber O-ring and stainless steel spring.  
 Set at around 0.030 bar.

## RING-SHAPED AIR FILTER

"Tech-foam" polyurethane foam mesh (polyester base), air filtration 40 µ.

## MAXIMUM CONTINUOUS WORKING TEMPERATURE

212°F (100°C).

## FEATURES

The use of SFW. pressurised breather caps which create a pressure plenum chamber right above the oil level within tested limit conditions, in order to avoid any reservoir deformation, offers the following advantages:

- reduces reservoir air volume intake keeping clean oil and filter
- improves suction pump action during working conditions reducing cavitation phenomenon
- prevents fluid leakage when the system is part of a mobile unit
- reduces foam in fluid.

## TECHNICAL DATA

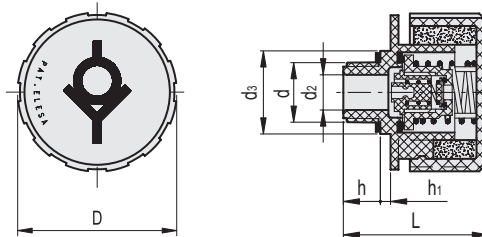
Air flow rate for each model can be determined from the graph calculating the difference between the pressure inside and outside the reservoir.

## SPECIAL EXECUTIONS ON REQUEST

Black cover.

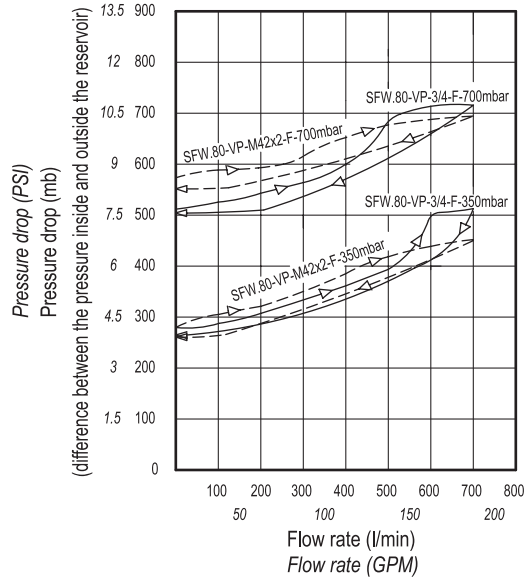


ELESA Original design

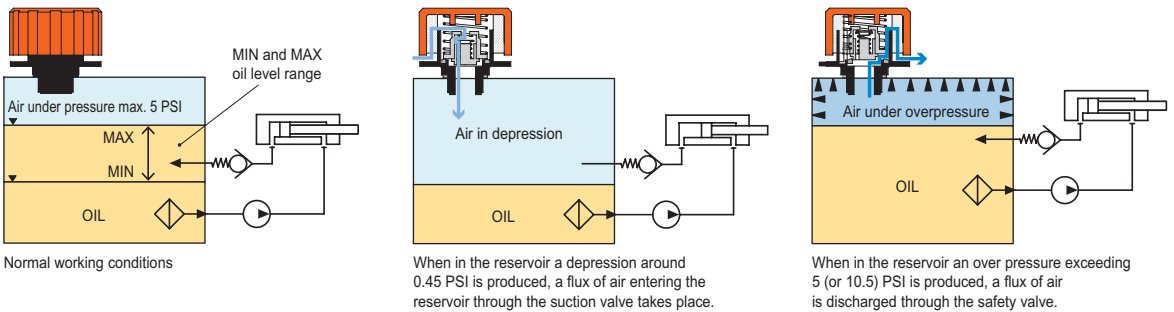


INCH

Code	Description	d	D	L	d2	d3	h	h1	⚖
954911	SFW.70-3/4 NPT+F-350 mb	3/4 NPT	2.76	2.48	0.63	1.42	0.59	0.24	0.23



SFW. pressurised breather cap functioning in a hydraulic circuit



- 1
- 2
- 3
- 4
- 5
- 6
- 7
- 8
- 9
- 10
- 11
- 12
- 13
- 14
- 15
- RH

Accessories for hydraulic systems